



Demographics

Population estimate (2021)

CYP (0-19) 37,165
Adults 88,864
65+ 21,806
Total 147,835

Deprivation ranking (2019)

46th
most deprived area out
of 317 local authorities

Proportion of LSOAs in most
deprived 10% nationally (2019)

19%

List of LSOAs in most deprived 10%
nationally (2019)

Brookfield
City Centre
Deepdale
Fishwick & Frenchwood
Ribbleton
St Matthew's

Economic status

People in employment
(Oct 2021 – Sep 2022)

65%

ESA claimants for mental and behavioural
disorders: rate per 1,000 working age
population (2018)

40

Job density (2021)

1.12*

**Jobs density is defined as the number of jobs in
an area divided by the resident population aged
16-64 in that area. For example, a jobs density of
1.0 would mean that there is one job for every
resident aged 16-64.*

Crime

All crime (Sep 2021 – Aug 2022)
(Rate per 1,000 population)

126.8

Anti-Social Behaviour
(Sep 2021 – Aug 2022)
(Rate per 1,000 population)

55.2

Mortality

Under 75 mortality rate from all
cardiovascular diseases: Directly
standardised rate per 100,000 (2020)

97



Excess Weight

% of adults (aged 18+) classified as overweight or obese (2020/21)

63%

Physical activity levels in adults

(whole population 16+)
(November 2020/21)

Inactive: less than 30 minutes a week

30%

Fairly active: 30-149 minutes per week

10%

Active: at least 150 minutes a week

61%

Physical inactivity levels in adults

Inactive: less than 30 minutes a week gender
(November 2020/21)

Female

28%

Male

31%

Physical inactivity levels in adults

Inactive: less than 30 minutes a week age (November 2020/21)

Aged 16-34 - 24%
Aged 35-54 - 32%
Aged 55-74 - 34%
Aged 75+ - Data unavailable

Physical inactivity levels in adults

Inactive: less than 30 minutes a week (Long-term health condition or disability)
(November 2020/21)

Disability or long term health condition

53%

No disability or long term health condition

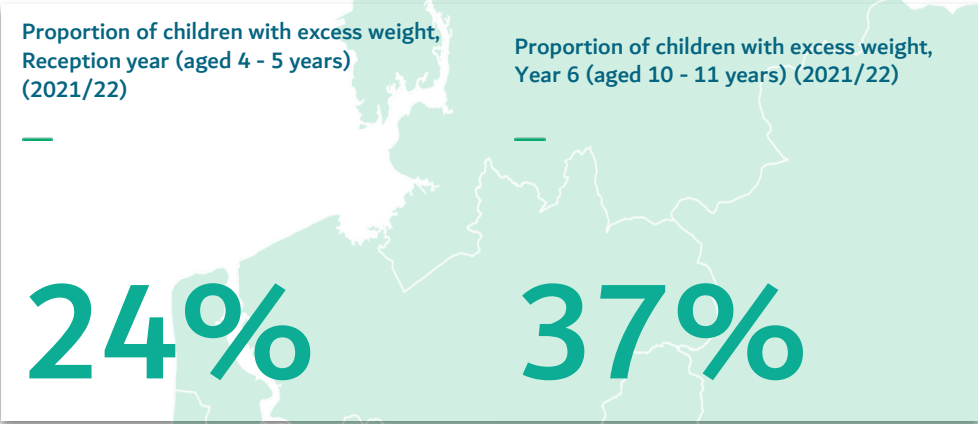
22%

Physical inactivity levels in adults

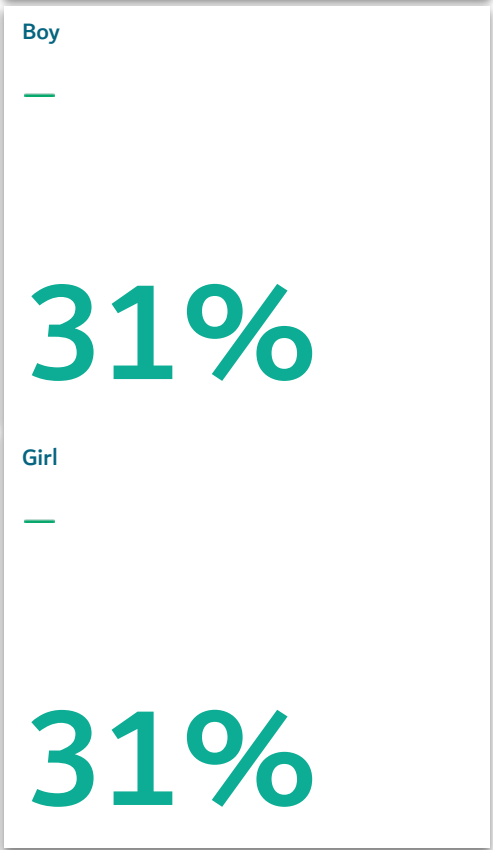
Inactive: less than 30 minutes a week (Socioeconomic status)
(November 2020/21)

NS SEC 1-2 (higher) 21%
NS SEC 3-5 (middle) 27%
NS SEC 6-8 (lower) 42%

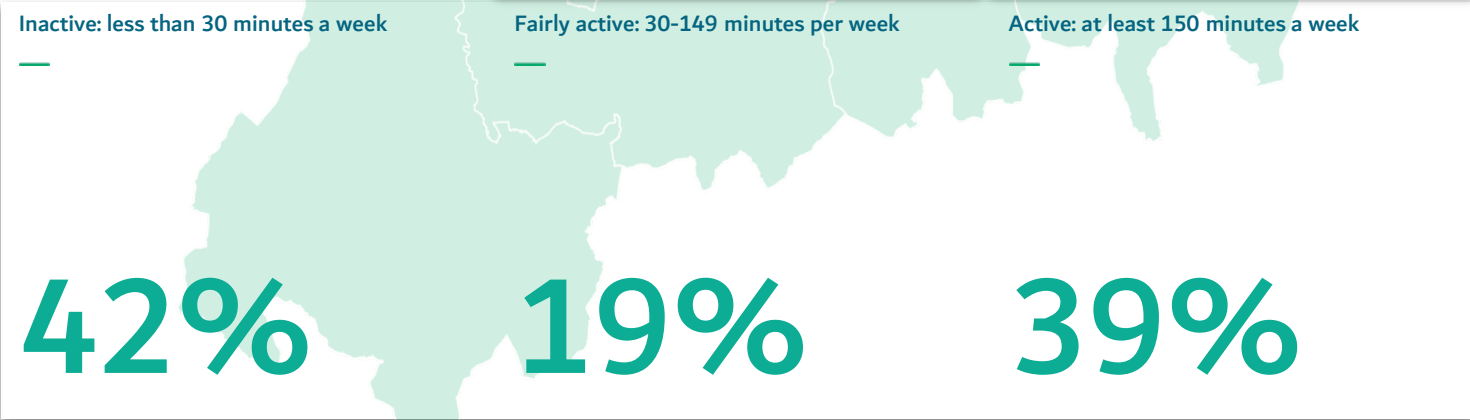
Excess Weight



Gender Breakdown on “Less Active” Levels (2020/21)



Physical activity levels in children & young people
(Ages 5-16) (2021/22)



Not in Education, Employment or Training (NEET)

